



Community

**The
Cards**

The Cards

Community

The functionality 'community' refers to the ways in which the community, its members and their relations become visible on the platform, opening opportunities for identification, and a sense of belonging.

Community refers to the representation of and passive experience of a community.



1. Samen sterk in Deelmobiliteit

In De Pijp doen we dingen samen, en dat geldt ook voor onze deelauto's. We zorgen dat ze altijd netjes en klaar zijn voor de volgende.

[Lees meer...](#)

2. Open en Eerlijk Platform

Ons deelplatform is gebouwd met de gedachte aan openheid en eerlijkheid. Geen geheimzinnige data-verzamelingen; we zijn

[Lees meer...](#)

3. Toegankelijk voor iedereen

Onze deelauto's zijn voor ieder- een in De Pijp. Je hoeft geen techneut te zijn, ons platform is zo simpel als wat. We houden de kosten eerlijk

[Lees meer...](#)



Home



Boeken



Mijn ritten



Account



Meer

Manifesto

A *manifesto* identifying communities' main goals and values prominently placed on the platform is a way for the community to present itself to (aspiring) members and outsiders, reinforcing its collective ambitions, and potentially contributing to community building.

By having members and sharing providers sign the declaration, the manifesto stimulates commitment and provides a clear frame for sharing and the values of the digital platform.

The Cards

Community

Linked cards → sustainability dashboard

Image → Manifesto of community ED de Pijp is visualized on the DIKS car sharing platform.

Design → HiiS – team 1

Electrische Deelauto Voor Amsterdam de Pijp



Citizens' Council

A *citizens' council* involves members in the decision-making and conflict resolution processes; it can deliberate on any community issue, which enhances the cohesion of the group.

By visualising the council on the application screen, it enables a group to present itself and its principal goals. It can stir enthusiasm and cohesion by displaying dedication and action.

The Cards

Community

Linked cards → poll, forum

Image → Illustration of the citizen' council of ED de Pijp.

Design → HHiS – team 2



ED DEPIJS



Branding & Logo

A unified brand approach under a recognizable name, including a logo, creates greater visibility and understanding of the community's objectives.

It's a way for the members to represent themselves to the outside world. This can enrich the identity of the group and enable cohesion.

The Cards

Community

Linked cards → marketing campaign, sidewalk chalk art

Image → Logo based on Amsterdam Andreas crosses created for ED de Pijp.

Design → HliS – team 3



Ontsnap de stad.
Ga op avontuur.



Marketing Campaign

A marketing campaign that uses posters placed in the surroundings can function as a way for the community and its members to represent themselves and their story locally. These posters can enhance the cohesion of the group and its visibility in the neighbourhood.

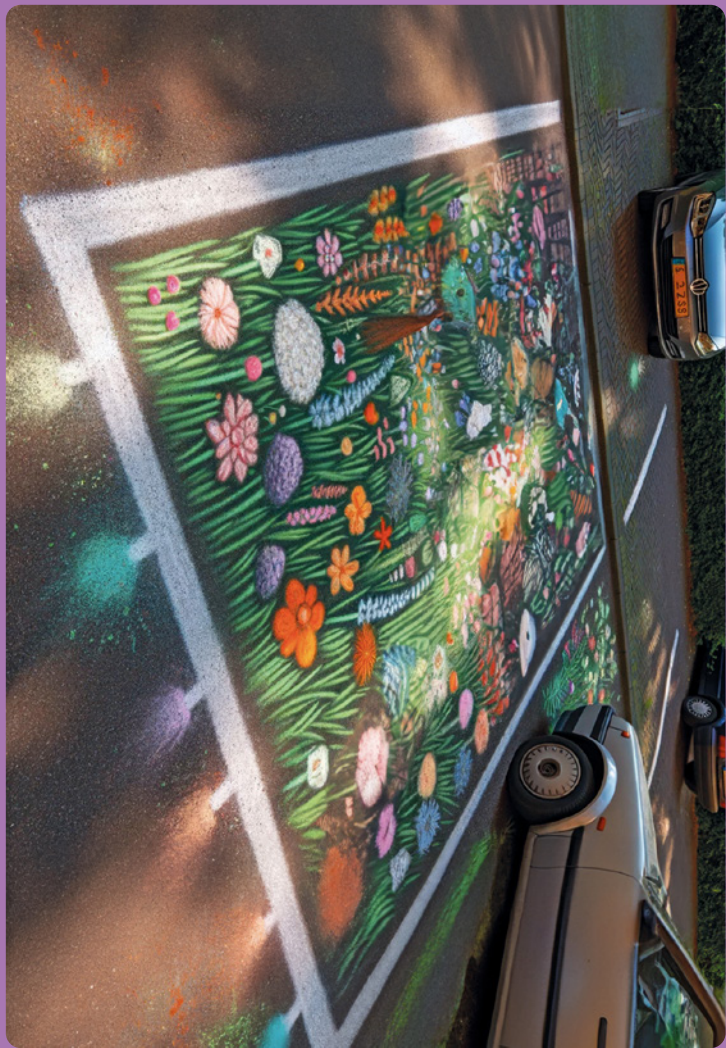
The Cards

Community

Linked cards → branding & logo, sidewalk chalk art

Image → Poster campaign created for ED de Pijp community.

Design → HliS – team 3



Sidewalk Chalk Art

Sidewalk chalk art is a way to protest the current situation. It is a creative and fun approach that envisions the community's joint ambitions in the physical world. It is used for community engagement.

It can influence the behaviour of members and neighbours to participate in these ambitions and encourage community involvement.

The Cards

Community

Linked cards → branding & logo, marketing campaign

Image → PSidewalk chalk art envisioning the joint ambition of ED de Pijp.

Design → HliS – team 3



1/5
Parkeervergunningen
ingeleverd



620 pnt
+30 Spaarpunten

Welkom terug, Jaap!

Met deze trip heb je...



€ 10,56
bespaard



24 punten
naar je spaarpot

CO₂

1,2 kg
minder uitgestoot



Home



Boeken



Mijn ritten



Account



Meer

Profile

The *individual profile* function is a fundamental element of self-presentation. Being able to represent yourself as a member of the community on the platform using identity traits (i.e., photos, names, and profiles) opens opportunities for identification and a sense of belonging.

Showing the overall community goals in combination with an individual profile increases reciprocal recognition, familiarisation, and trust within the group.

The Cards

Community

Linked cards → manifesto, group representation

Image → Individual profile showing individual and community goals.

Design → HiiS – team 1



Group Representation

The *group presentation* function shows the community as a whole. It exposes its profile, values, objectives, and work methods. This enables the community and its ongoing activities to be set in the specific socio-spatial context of sharing.

It also enables existing members to remain committed while positioning the mutual purpose towards (potential) new members, thereby encouraging collective spirit and communal cohesion.

The Cards

Community

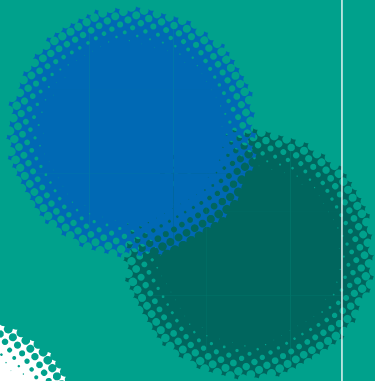
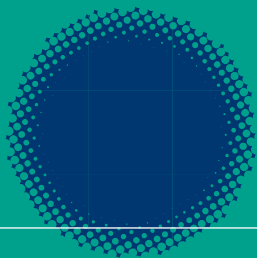
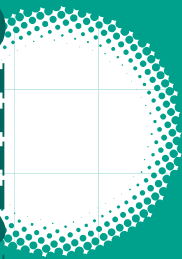
Linked cards → manifesto, profile

Image → Illustration of the ED de Pijp community representing themselves as a group.

Design → HliS – team 3

**The
Cards**

Communication



**The
Cards**

Communication

The functionality 'communication' refers to the ways in which members can contact each other and to exchange all kinds of information with each other.

Communication adds actual channels for social interaction. These interactions are profoundly situated within the communal setting, which therefore imply a deeper sense and familiarity.



Volgende gebruiker



Hey, ik denk dat ik mijn jas
in de auto heb laten liggen.
Klopt dat?

VG

Ja, dat klopt! Hij ligt nog op
de achterbank. Zal ik hem
even komen brengen als ik
weer terug ben?



Q W E R T Y U I O P

A S D F G H J K L

↑ Z X C V B N M ↵

123



space



return

Chat

The *chat* function is a fundamental element that allows members to directly connect and communicate with each other and the sharing provider.

Commercial carsharing platforms leave out chat functions due to privacy concerns. However, enabling ways to interact with previous and succeeding car users is a necessary mechanism on community-based car sharing platforms.

**The
Cards**

Communication

Linked cards → forum

Image → Option to chat with previous and next driver in the car sharing platform of ED de Pijp.

Design → HiiS – team 1

10:52



Bijdragen



Begin een discussie

Verken nieuwe horizonten! Deel je gedachten, ontdek meningen en laat de discussies beginnen. Jouw stem, jouw community.

Starten



Stel een

Heb je nieuws bevestigd of ze antwoorden? Stel de community ha

Stel je



Ideeën

[Bekijk alles](#)

Buurtinitiatieven voor Autodelen

Laten we brainstormen over lokale initiatieven om het autodelen in De Pijp te...



243

Autodelen en Duurzaamheid

Hoe kunnen we de impact van autodelen op het milieu verminderen? Ideeën voor gr...



+



Rijden



Dashboard



Nieuws



Bijdragen



Profiel

Forum

A *forum* functionality gives members the opportunity to launch random discussions, share new ideas and tips, pose questions, release a survey, and provide feedback on their experiences.

It is an easily accessible approach for social interaction and post-use feedback.

The Cards

Communication

Linked cards → feedback page, citizens' council, poll, chat

Image → Forum page to share discussions and ideas as part of the ED de Pijp car-sharing platform.

Design → HiiS – team 3



Feedback hub

Stem op een van de bestaande ideeën die je hieronder ziet of schrijf je eigen feedback op voor ons!

Nieuwe feedback

Populaire feedback

Mijn feedback

Zie alles ▾

Sorteer op ▾

31
stemmen

De laadpaal aan de Pieter Aertszstraat werkt niet goed meer.

7 Reacties **Wordt onderzocht** Maart 2023

26
stemmen

Er zijn te weinig auto's beschikbaar in de buurt van de Albert Cuyp markt.

3 Reacties **In de wacht** Juni 2023

47
stemmen

Het scannen van de auto voor schade duurt erg lang. Mogelijke versnelling van dit proces zo fijn zijn!

16 Reacties **Wordt uitgevoerd** Augustus 2023

12
stemmen

De kia, e-Niro heeft een defecte laadkabel

9 Reacties **In de wacht** December 2023



Feedback Page

The *feedback page* (inspired by the Minecraft feedback page) provides a transparent and open way to communicate with members of the community and service providers on the sharing platform.

It provides a low threshold for community involvement; each member can share issues and comment on ideas and feedback to improve the platform.

The Cards

Communication

Linked cards → forum, poll

Image → Feedback page for ED de Pijp inspired by Minecraft feedback.

Design → HiiS – team 2

10:52



Nieuws

De Pijp omarmt Elektrisch
Autodelen: De Toekomst van
Mobiliteit



12 lezers

04 feb 2024

**Innovatief Autodelen in De
Pijp: Elektrische Deelauto's
Nu Beschikbaar!**

[lees meer](#)



28 jan 2024

**Innovatief
Pijp: Elekt
Nu Besch**

[lees meer](#)

24 jan 2024

**Buurt-Nieuws: Elektrisch
Delen Transformeert De
Pijp's Transportlandschap**



06 jan 2024

**De Pijp Gaat Groen:
Elektrische Autodeelservice
Verandert de Normen**



29 dec 2023



Rijden



Dashboard



Nieuws



Bijdragen



Profiel

Neighbourhood News

The functionality of *news items* on the platform provides the opportunity to communicate activities and issues in the neighbourhood.

To further develop and popularise sharing in the neighbourhood, it's an option to link these *news items* with the local newspaper.

The Cards

Communication

Linked cards → forum

Image → Neighbourhood news on the ED de Pijp carsharing platform.

Design → HIiS – team 3

Sustainability Dashboard

The *sustainability dashboard* raises awareness with real-time CO₂ statistics. The dashboard provides insight into the environmental impact and benefits of sharing.

It displays the reduction of CO₂ at both the individual and collective levels in a dashboard on the platform, which enhances the community feeling of working together towards a bigger goal.

The Cards

Communication

Linked cards → manifesto, community loyalty program

Image → Visualization of a possible CO₂ dashboard for ED de Pijp.

Design → HHiS – team 3

Cooperation



**The
Cards**

**The
Cards**

Cooperation

**The functionality
'cooperation'
refers to the
ways in which it
allows members
to collaborate on
joint ambitions.**

**It represents
the most intense
gradation of
communal
practice.**



Car polls

Wij vinden het belangrijk dat we als gemeenschap kunnen stemmen voor dingen die belangrijk zijn voor de hele buurt. Stem op de poll waar jij het meest mee eens bent en werk zo mee aan een fijnere en groenere wijk!

31
stemmen

Wat gaan we doen met de vrijgekomen plekken in de Pieter Aertszstraat.

- Speeltuin
- Groen
- Honden uitlaat plek

26
stemmen

Wat zou je graag op dit platform terug willen zien.

- Overzichtje CO2 uitstoot
- Geld besparing
- Overzichtje 'Wat wordt er gedaan met de vrijgekomen ruimtes'

47
stemmen

Wat gaan we doen met de vrijgekomen plekken in de Hemonystraat.

- Speeltuin
- Groen
- Honden uitlaat plek

12

Wat gaan we doen met de vrijgekomen plekken in de Sarphati



Poll

The *poll-voting* function is a way to communicate the joint ambitions of the community. In addition, it's a way to deliberate and vote on any matter they deem essential for the community. It provides transparency and participation.

Members can vote on the destination of vacant parking spaces and track their progress on the map, making the community actively involved in decision-making.

The Cards

Cooperation

Linked cards → forum, feedback page

Image → A poll to decide what to do with the vacant parking spaces in the neighbourhood.

Design → HHiS – team 2



Jouw spaarpunten



217 Punten

Boek je je volgende rit met korting?

50
punten



5% korting
op je rit

Activeren

100
punten



10 KM
korting

Activeren

500
punten



50%
op

Nog 83

Of doneer je punten!

50

100

500



Home



Boeken



Mijn ritten



Account



Meer

Piggy Bank

The *piggy bank* function keeps people involved and rewards community contributions. Members earn points for activities such as borrowing a car, offering driver services, and giving up parking permits, which they can redeem for discounts or donate to the community aid fund.

Members take an active role in the community and support their joint ambitions using the *piggy bank* function.

The Cards

Cooperation

Linked cards → community loyalty program, aid fund, driver service

Image → The piggy bank for car-sharing platform ED de Pijp showing collected points and options for discounts.

Design → HliS – team 1



Gemeenschappelijke doel



1/5

36 opgegeven parkeervergunningen
Nog 4 te gaan voor het volgende doel!

Wat wordt het volgende doel?

De volgende plek komt voor de Hemonystraat 12.

[Bekijk in het ruimteoverzicht](#)

Jouw keuze

Nieuwe fietsenstalling



Uitbreiding van de speeltuin



Klein plantsoen



Home



Boeken



Mijn ritten



Account



Meer

Community Loyalty Programme

The *community loyalty programme* accumulates points for the community as a whole. To this end, the community can set up mutual goals for the neighbourhood, such as reducing cars, becoming more green, creating more space for social activities, or reducing CO₂.

The Cards

Making this an integral part of the digital sharing platform brings these mutual ambitions to life in the community.

Cooperation

Linked cards → piggy bank, sustainability dashboard, aid fund

Image → Community loyalty programme for car-sharing platform ED de Pijp.

Design → HliS – team 1



Account

Jouw voorkeuren

Naam:

de Pijp, Jaap
Eduard

- 1 Dit is je volledige naam zoals aangeven op je rijbewijs.

Buurtchauffeur



- 1 Ben je bereid om ritjes voor mensen uit de buurt te verzorgen? Je kan je altijd afmelden; en het aannemen van een rit is niet verplicht.

Overig

Stadspas Amsterdam

Inactief

- 1 Heb je een Amsterdamse Stadspas? Laat m' checken bij DIKS voor korting op je rit.

Verzekering

Actief

- 1 Ook zonder zorgen op weg? Maak gebruik van onze verzekering en wees er altijd zeker van dat je zonder problemen op weg kan.

Geldig tot 31/1/2024



Home



Boeken



Mijn ritten



Account



Meer

Aid Fund

The *aid fund* option is linked to the Amsterdam city pass. It gives members with lower incomes the opportunity to rent cars at a discounted rate.

Members, donors, the municipality, and shared vehicle providers contribute to this fund, which enhances inclusiveness and solidarity within the community.

The Cards

Cooperation

Linked cards → community loyalty programme, piggy bank

Image → Activation of the Amsterdam city pass in the car sharing platform is a part of the aid fund.

Design → HliS – team 1



1/5
Parkeervergunningen
ingeleverd



620 pnt
+30 Spaarpunten

Welkom terug, Jaap!

Begin je dag goed met een paar simpele tikken.
Je volgende rit wacht op je!

Notificaties



BOEKING

1 minuut geleden

Je hebt een reservering geplaatst voor
de Fiat 500e (01-ABC-DE) voor 2
Februari 2024.



SPAARDOEL

10 min. geleden

🌟 Elke ingeleverde vergunning telt.
Volg onze voortgang en doe mee!



CHAUFFEURSDIENST 1 min. geleden

Er is een nieuwe aanvraag voor een
chauffeursdienst. Klik hier voor meer
informatie.



Home



Boeken



Mijn ritten



Account



Meer

Driver Service

The *driver service* functionality matches members together. Members without a drivers' license or another reason they can't drive can request a driver through the platform, and volunteer drivers who want to help accept these requests. The drivers earn credits for their *piggy bank*.

The *driver service* functionality connects members, and in doing so, it promotes a sense of community and cooperation.

The Cards

Cooperation

Linked cards → piggy bank, carpooling

Image → Activation of a driver request in the ED de Pijp sharing platform.

Design → HHiS – team 1

Agenda

Geplande ritten

Meerijden



BMW
36-45-WP

Donderdag 21 December

 Amsterdam Zuid-Oost

 Vertrek 12:00

 €0,05 p/km

Meer informatie



BMW
36-45-WP

Donderdag 4 Januari

 Amsterdam Zuid-Oost

 Vertrek 12:00

 €0,05 p/km

Meer informatie



Agenda



Nu rijden



Chat

Carpooling

The *carpooling* function connects drivers and passengers based on matching destinations.

Carpooling is a concept where several people share a car for a joint trip, often to work or to events. On the sharing platform, members can select if they want to share their ride.

This form of ride-sharing is a way for community members to cooperate. It reduces CO₂ emissions and travel costs.

The Cards

Cooperation

Linked cards → driver service

Image → Activation of the ride-sharing option (meerijden) in the VGA deelauto platform.

Design → BD – team 1